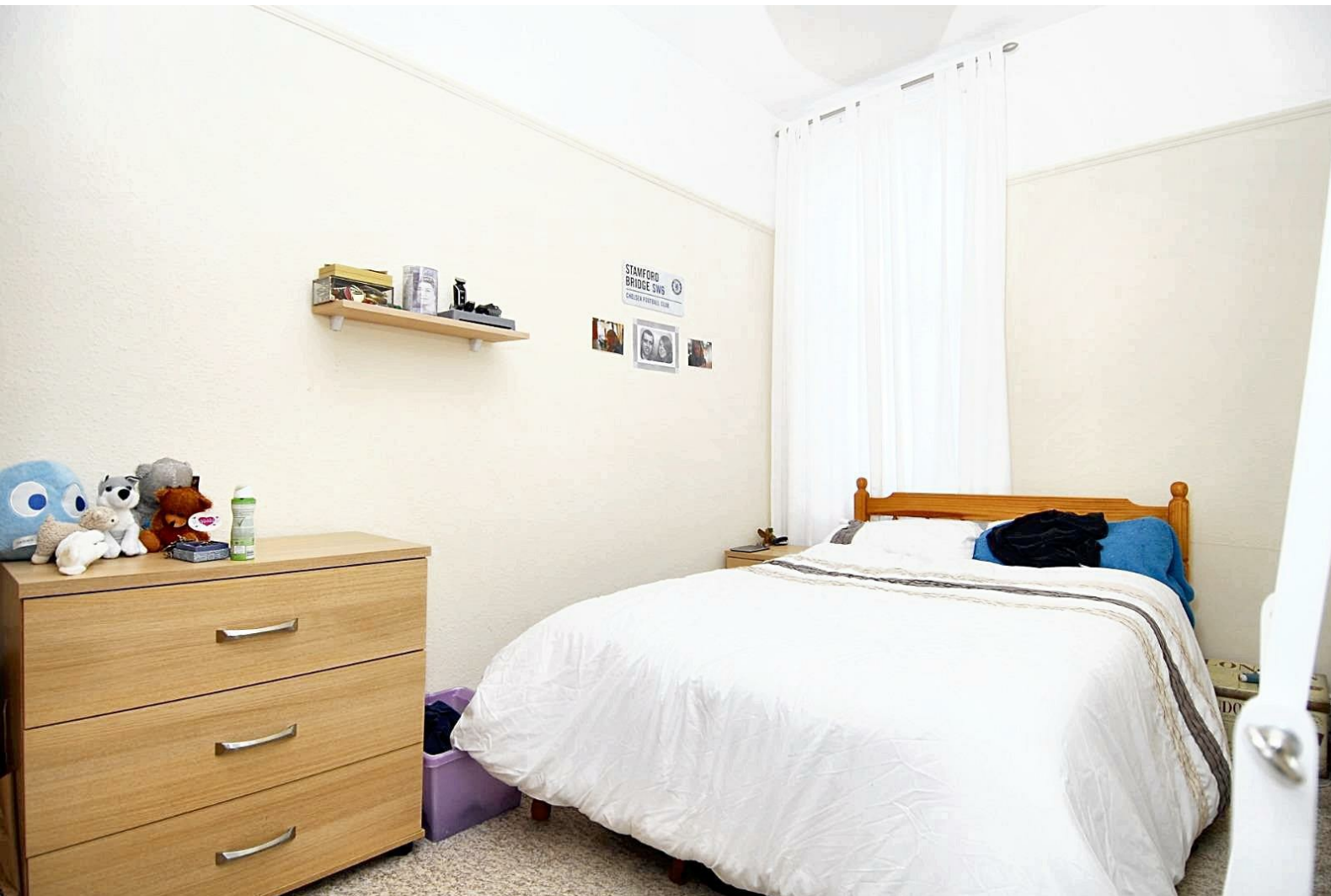


# clever



## 9 Napier Terrace, Flat 2

, Plymouth, PL4 6ER

**£140 Per week**



Located in the heart of Napier Terrace, Flat 2 offers a fantastic opportunity to own a charming 2-bedroom apartment in Plymouth. This delightful property boasts spacious bedrooms and a modern kitchen/diner, perfect for those who appreciate contemporary living.

Whether you're looking for a comfortable student flat or a stylish home in a vibrant area, this apartment ticks all the boxes. Don't miss out on the chance to make this property your own and enjoy the best of what Plymouth has to offer.

£140 per week per room based on 50 week contract

Student property- Available 1st September

Gas, electric water and WIFI included! (fair usage policy applies)



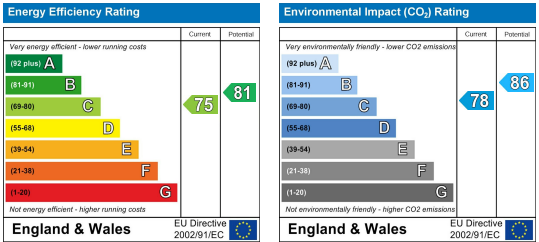
Area Map



Floor Plans



Energy Efficiency Graph



These particulars, whilst believed to be accurate are set out as a general outline only for guidance and do not constitute any part of an offer or contract. Intending purchasers should not rely on them as statements of representation of fact, but must satisfy themselves by inspection or otherwise as to their accuracy. No person in this firms employment has the authority to make or give any representation or warranty in respect of the property.